

Eagle



Update

Yoncalla, Oregon

Volume 7, Issue 8

May 2022

www.yoncalla.k12.or.us

PreSchool Update!

We had our annual Fancy Tea Party at Preschool! The children were invited to pick out accessories such as glasses, feathered boas, hats, gloves, and more. This year has been so unpredictable, with closures and quarantines, we just needed time to be silly and celebrate! We will miss our friends who are moving up to Kindergarten, but we are excited for them to start their "big kid" adventures!

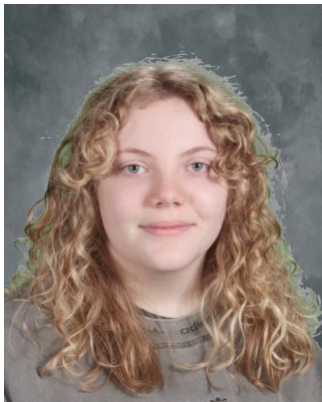


Inside this issue

| | |
|-------------------------------|---|
| Student of the Month | 2 |
| ONREF Grant | 3 |
| Senior Night | 4 |
| Summer Fun | 5 |
| Free Dental Assessments | 6 |
| Partner Sports Camp | 7 |



Preschool fun continued...



Brinleigh Lewis
Yoncalla Middle School



Tiara Martin
Yoncalla High School

Middle/High School Students of the Month

Yoncalla School District Priorities

1. Each student will enjoy positive, engaging learning environments.
2. Each child will possess the knowledge and skills necessary to be successful in post secondary education and careers, and the self-reliance to be a productive citizen.
3. A strong sense of community is recognized and nurtured among all stakeholders
4. Facilities and finances are managed effectively and efficiently for the benefit of each child.

Wilde Receives \$3K Grant from Oregon Natural Resources Education Fund (ONREF)

Janelle Wilde, Natural Resources teacher, received a grant for almost \$3000 from ONREF to buy water quality equipment for the NR classes. Wilde's NR classes have the opportunity to work with a wildlife biologist doing egg counts for frogs.

The frogs that will be involved in these surveys are bullfrogs which are an invasive species and the red legged frogs, which are a threatened species in Oregon. The program will be purchasing two different kinds of waders and well as pH and temperature meters. These items will be combined with another grant that will be purchasing more temperature meters and a HOB0 Dissolved Oxygen data logger. The data logger will aid in knowing the health of the pond that is to be monitored.

ONREF grants support high schools in Oregon that commit to provide educational opportunities in the field of Forestry. These Forestry Programs of Study focus on instruction that will integrate areas of wood products, silviculture, harvesting, fisheries, wildlife, water, soils, recreation, and management of other forest related natural resources of Oregon and provide students with related career and leadership development.

Prom Court



Senior Nights



IT'S AN ADVENTURE FILLED YONCALLA SUMMER!



SCAN ME

**YONCALLA HIGH SCHOOL WILL BE OFFERING
CAMPS AND SUMMER SCHOOL FOR STUDENTS.**

**Need to catch up on credits and be on track for graduation? Want to explore the waterfalls of Douglas and Lane County? Gain skills in team work and learn the rules of basketball? What about wanting to write code and print in 3D? Explore the beauty that is Douglas County from the Mountains to the Coast? Or even fight in a battle?
It's a summer full of adventures at Yoncalla, are you ready to join us?**

REGISTRATION OPENS MONDAY, MAY 23rd 2022

Camps and Classes start Monday June 13th

**Visit Yoncalla High School's webpage to
register or scan the QR Code.**

**All participants will be provided breakfast and
lunch.**

**Paper registration forms are also available.
Please contact the YHS office for one.**

**FREE Dental
Assessments, Fluoride
Varnish and Sealants
At
Yoncalla High School
On
May. 23rd- May. 24th**



**Fewer cavities
Lower dental
bills
BIG smiles**

JULY 11 - 21, 2022

9:45 AM - 3:00 PM

PARTNER

Sports **CAMP**



Formerly known as Camp Shriver, Partner Sports Camp is a cooperative effort of Douglas ESD and the YMCA of Douglas County.

Most activities take place at or are launched from the YMCA, 1151 N.W. Stewart Parkway, Roseburg,

The camp is open to students with disabilities (ages 8 -21) across Douglas County.

To register, please click either the camper or partner registration link below



Camper registration link

SCAN ME



Partner registration link (for volunteers)

SCAN ME



**fun day
of
outdoor
activities**



EMAIL us at : partnersportscamp@douglasesd.k12.or.us
Additional Information: <https://douglasesd.k12.or.us/partnersports-camp/>

